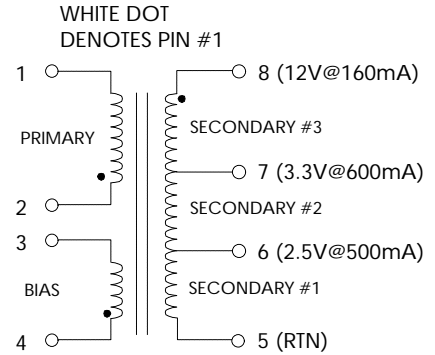


TABLE 1: ELECTRICAL SPECIFICATIONS AT 25 °C

PARAMETER	SPEC LIMITS			UNITS
	MIN.	TYP.	MAX.	
PRIMARY INDUCTANCE (2-1) VOLTAGE = 0.250Vrms FREQUENCY = 100 KHZ	1105	1228	1350	μHY
TURN RATIO'S: SECONDARY (8-5) : PRIMARY (2-1)	-----	1 : 4.88	-----	± 3%
SECONDARY (8-7) : PRIMARY (2-1)	-----	1 : 6.917	-----	± 3%
BIAS (4-3) : PRIMARY (2-1)	-----	1 : 3.77	-----	± 3%
PRILEAKAGE IND. (8-5 SHORTED) VOLTAGE = 0.250Vrms FREQUENCY = 100 KHZ	-----	-----	50.0	μHY
HIPOT: PRIMARY TO SECONDARY	3000	-----	-----	Vrms
BIAS TO SECONDARY	3000	-----	-----	Vrms

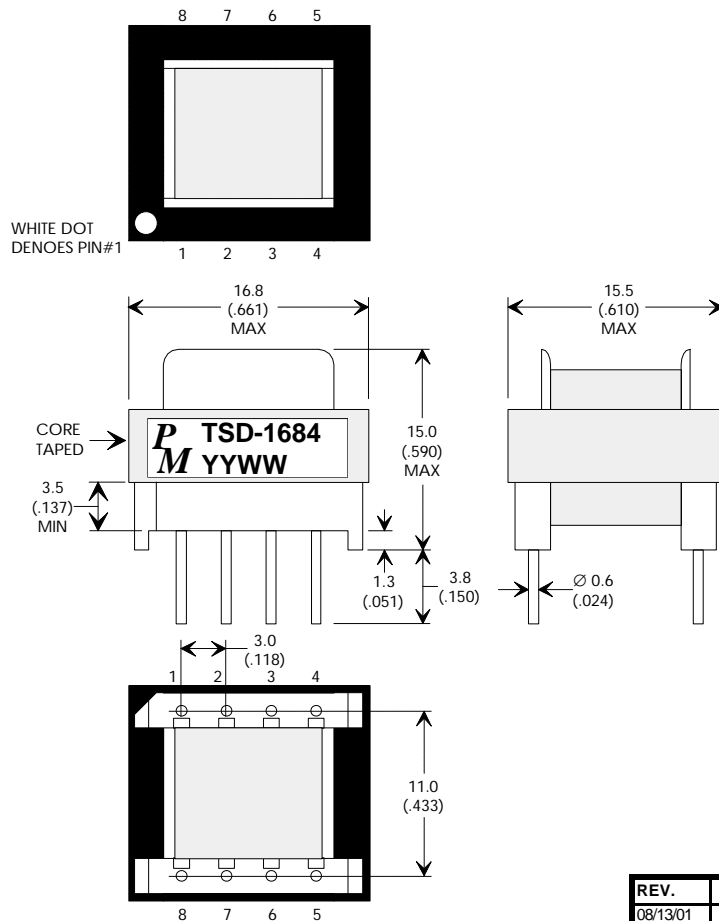
FIGURE 1: SCHEMATIC DIAGRAM



NOTE1:

- A) ALL MATERIALS MEET "UL", "CSA" & "IEC" REQUIREMENTS
- B) TRIPLE BASIC INSULATED SECONDARY.
- C) VARNISH FINISHED ASSEMBLY.

FIGURE 2: PHYSICAL DIMENSIONS mm (INCHES)



REV.	DESCRIPTION OF CHANGES	BY
08/13/01	ORIGINAL RELEASE	PP
09/05/01	UPDATED RELEASE	LL
10/25/01	ADDED ASSEMBLY DETAIL PG 3, REMOVED "BIFILAR" FROM BIAS	MD
11/01/01	CHANGED PRIMARY TO 3 LAYERS, ADDED MARGIN TAPE TO SEC. SIDE	MD
01/21/03	ADD MORE INFO. TO SCHEMATIC	PP



UNLESS OTHERWISE SPECIFIED
DIMENSIONS ARE IN MM
DIMENSIONAL TOLERANCES ARE:
DECIMALS ANGLES
.X ± .25 ± 0° 30'
.XX ± .15
DO NOT SCALE DRAWING

TRANSFORMER CONTROL DRAWING	
PREMIER P/N: TSD-1684	REVISION: 01/21/02
DRAWN BY: PETER PHAM	REF: PWR-TOP232
SCALE: NONE	SHEET: 1 OF 3