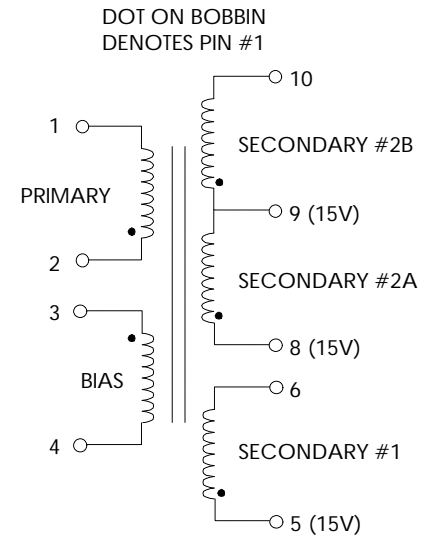


TABLE 1: ELECTRICAL SPECIFICATIONS AT 25 °C
SWITCHING TRANSFORMER DESIGNED FOR USE WITH TOP GX

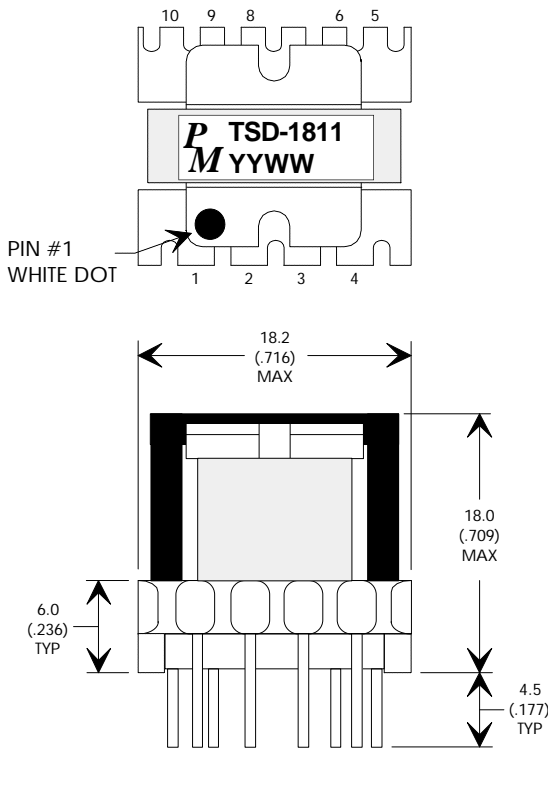
PARAMETER	SPEC LIMITS			UNITS
	MIN.	TYP.	MAX.	
PRIMARY INDUCTANCE (2-1) FREQ. = 100 KHZ @ 0.250Vrms	600	660	720	μHY
TURNRATIO'S: SEC #1 (5-6) : PRIMARY (2-1) SEC #2A (8-9) : PRIMARY (2-1) SEC #2B (9-10) : PRIMARY (2-1) BIAS (3-4) : PRIMARY (2-1)	-----	1:7.0	-----	± 3%
PRILEAKAGE IND. (SEC'S SHORTED) FREQ. = 100 KHZ @ 0.250Vrms	-----	-----	30	μHY
HIPOT: PRIMARY TO SECONDARIES SECONDARIES TO BIAS PRIMARY TO BIAS	2000 2000 2000	----- ----- -----	----- ----- -----	Vrms Vrms Vrms
INPUT OUTPUT POWER	85 ----- -----	----- 15 -----	265 ----- 15	Vac Vdc Watts

FIGURE 1: SCHEMATIC DIAGRAM

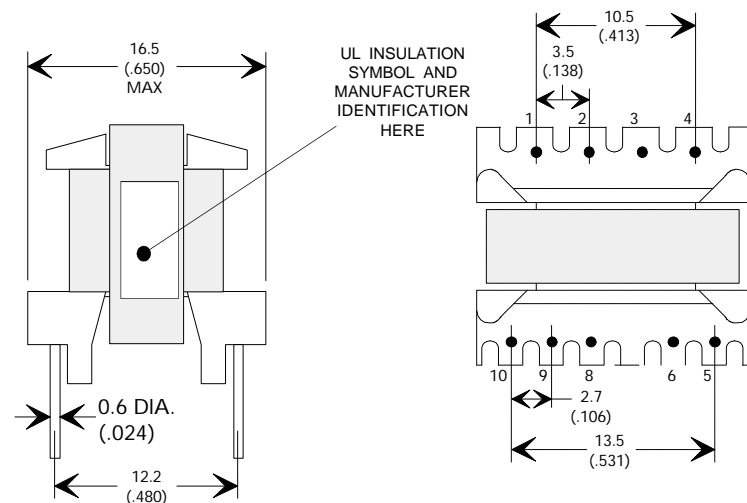


NOTE1:
A) ALL MATERIALS MEET "UL", "CSA" & "IEC" REQUIREMENTS
B) TRIPLE BASIC INSULATED SECONDARY.
C) VARNISH FINISHED ASSEMBLY.

FIGURE 2: PHYSICAL DIMENSIONS mm (INCHES)



REMOVE PIN #7, OR TRIM AND COVER WITH CEMENT



REV.	DESCRIPTION OF CHANGES	BY
11/19/02	ORIGINAL RELEASE	PP
12/17/02	UPDATED RELEASE	LL



UNLESS OTHERWISE SPECIFIED
DIMENSIONS ARE IN MM
DIMENSIONAL TOLERANCES ARE:
DECIMALS ANGLES
.X ± .25 ±0° 30'
.XX ± .15
DO NOT SCALE DRAWING

TRANSFORMER CONTROL DRAWING	
PREMIER P/N: TSD-1811	REVISION: 12/17/02
ENGR: PETER PHAM	REF: TOP 24x
SCALE: NONE	SHEET: 1 OF 3