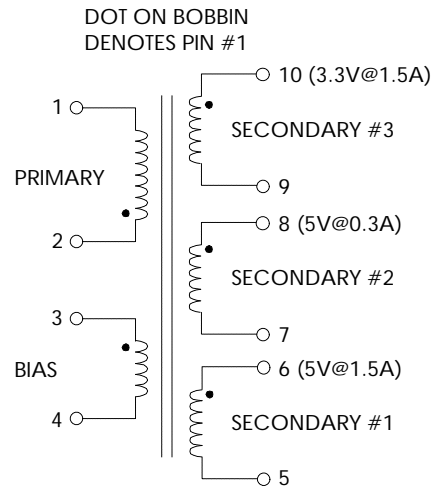


**TABLE 1: ELECTRICAL SPECIFICATIONS AT 25 °C**

SWITCHING TRANSFORMER DESIGNED FOR USE WITH POWER INTEGRATIONS TOP-233Y

PARAMETER	SPEC LIMITS			UNITS
	MIN.	TYP.	MAX.	
PRIMARY INDUCTANCE (2-1) FREQ. = 100 KHZ @ 0.250Vrms	873	970	1067	μHY
TURN RATIO'S: BIAS (3-4) : PRIMARY (2-1) SEC #1A (6-5) : PRIMARY (2-1) SEC #2 (8-7) : PRIMARY (2-1) SEC #3 (10-9) : PRIMARY (2-1)	-----	1 : 6.82 1 : 19.33 1 : 19.33 1 : 29	-----	± 4% ± 4% ± 4% ± 4%
PRI LEAKAGE (10 THRU 5 SHORTED) FREQ. = 100 KHZ @ 0.250Vrms	-----	-----	TBD	μHY
HIPOT: PRIMARY TO SECONDARY	3000	-----	-----	Vrms
BIAS TO SECONDARY	3000	-----	-----	Vrms
APP CIRCUIT PARAMETERS:(1) AC LINE VOLTAGE	90	-----	265	Vac
BIAS	-----	15	-----	Vdc
SEC #1 OUTPUT VOLTAGE	-----	5.0	-----	Vdc
SEC #1 OUTPUT CURRENT	150	-----	1500	mA
SEC #2 OUTPUT VOLTAGE	-----	5.0	-----	Vdc
SEC #2 OUTPUT CURRENT	30	-----	300	mA
SEC #3 OUTPUT VOLTAGE	-----	3.3	-----	Vdc
SEC #3 OUTPUT CURRENT	150	-----	1500	mA

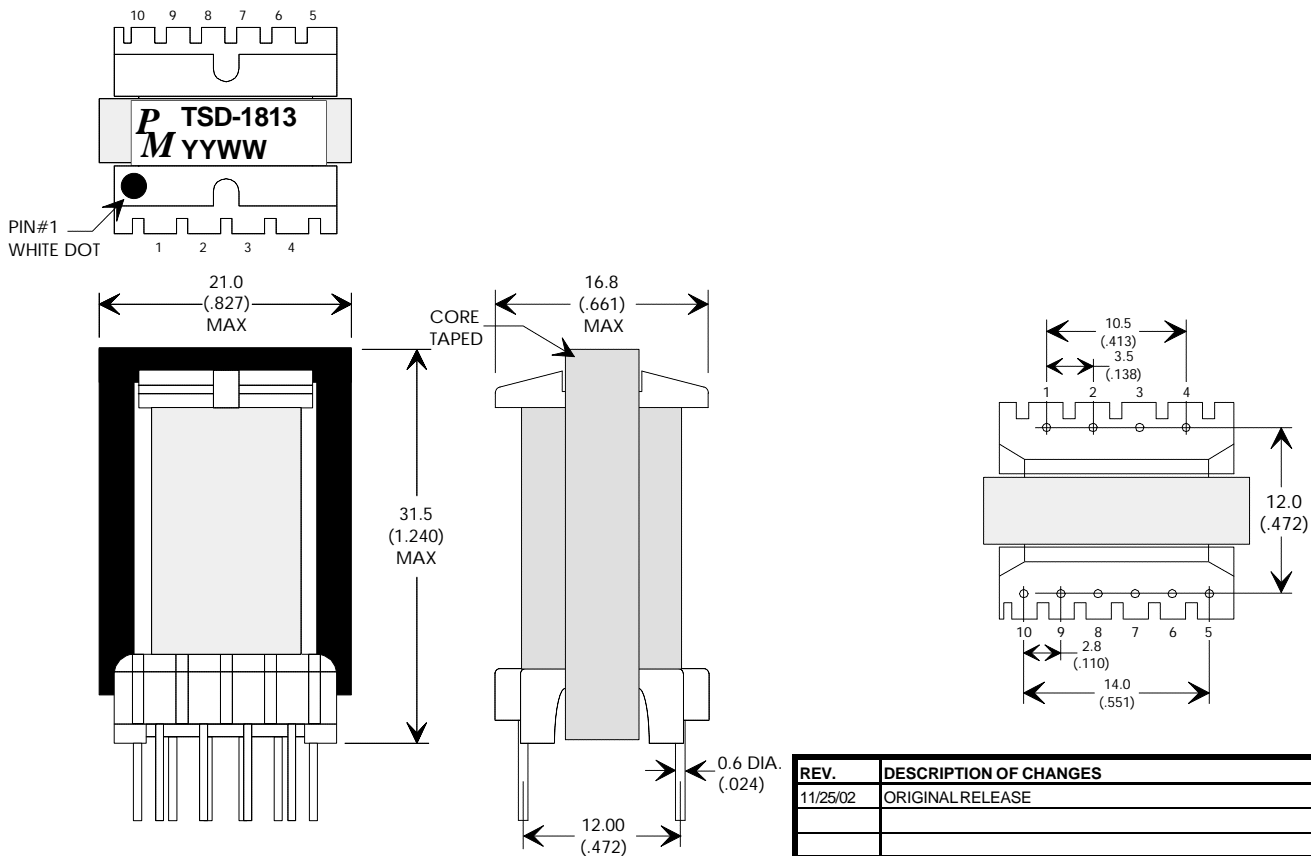
**FIGURE 1: SCHEMATIC DIAGRAM**



**NOTE1:**

- A) ALL MATERIALS MEET "UL", "CSA" & "IEC" REQUIREMENTS
- B) DESIGNED TO MEET ≥6.0mm CREEPAGE REQUIREMENTS.
- C) ALL MATERIAL RATED 130C OR BETTER.
- D) VARNISH FINISHED ASSEMBLY.

**FIGURE 2: PHYSICAL DIMENSIONS mm (INCHES)**



REV.	DESCRIPTION OF CHANGES	BY
11/25/02	ORIGINAL RELEASE	PP



UNLESS OTHERWISE SPECIFIED DIMENSIONS ARE IN MM DIMENSIONAL TOLERANCES ARE: DECIMALS ANGLES .X ± .25 ±0° 30' .XX ± .15 DO NOT SCALE DRAWING

FLYBACK TRANSFORMER CONTROL DRAWING	
PREMIER P/N: TSD-1813	REVISION: 11/25/02
DRAWN BY: PETER PHAM	REF: TOP233Y
SCALE: NONE	SHEET: 1 OF 3