

TABLE 1: ELECTRICAL SPECIFICATIONS AT 25 °C

PARAMETER	SPEC LIMITS			UNITS
	MIN.	TYP.	MAX.	
PRIMARY INDUCTANCE (1-2) VOLTAGE = 0.250Vrms FREQUENCY = 100 KHZ	190.8	201.4	212	μHY
TURN RATIO'S:				
SEC (16-15) : PRI (1-2)	-----	1 : 19	-----	± 4%
SEC (14-13) : PRI (1-2)	-----	1 : 4.75	-----	± 4%
SEC (12-11) : PRI (1-2)	-----	1 : 19	-----	± 4%
SEC (10-9) : PRI (1-2)	-----	1 : 19	-----	± 4%
SEC (7-8) : PRI (1-2)	-----	1 : 19	-----	± 4%
BIAS (4-5) : PRI (1-2)	-----	1 : 6.33	-----	± 4%
PRI LEAKAGE INDUCTANCE 100 KHZ, 250mV, TIE SEC'S	-----	-----	10	μHY
HIPOT: PRI & BIAS TO SECONDARY PRI TO BIAS	3750 2200	----- -----	----- -----	Vrms Vrms

FIGURE 1: SCHEMATIC DIAGRAM

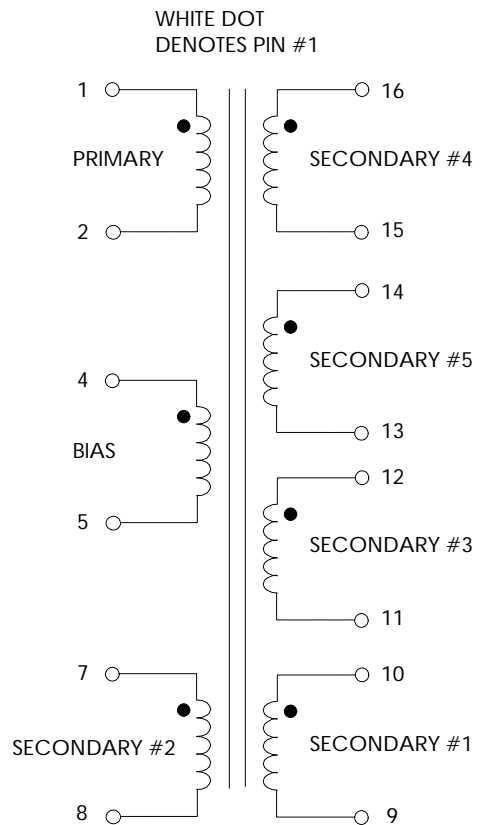
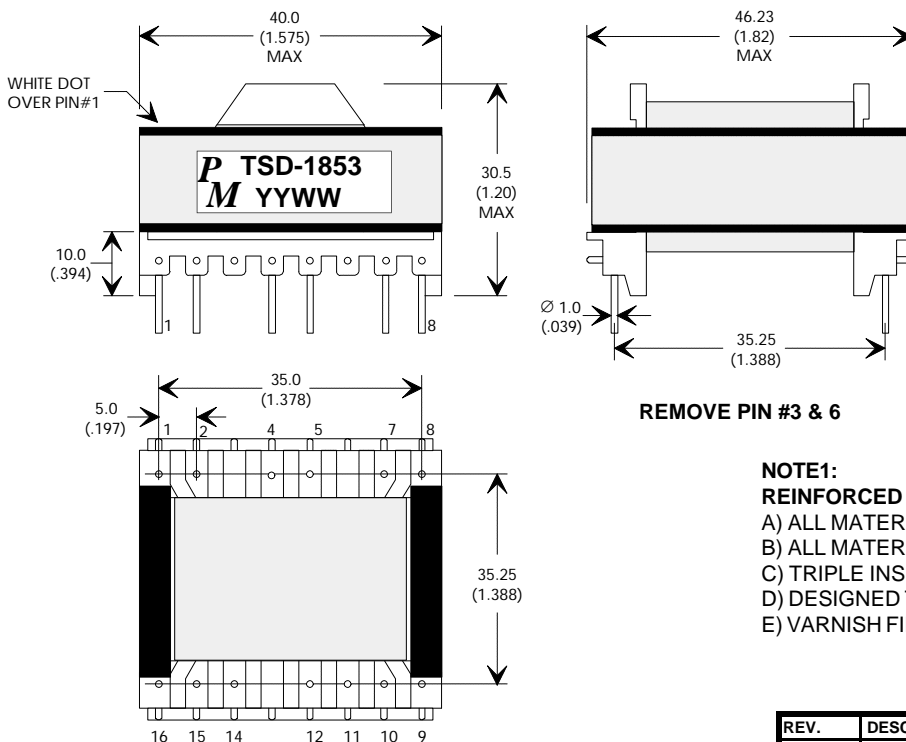


FIGURE 2: PHYSICAL DIMENSIONS mm (INCHES)



NOTE1:
REINFORCED INSULATION SYSTEM, UL1950, IEC950, CSA-950:
 A) ALL MATERIALS MEET "UL", "CSA" & "IEC" REQUIREMENTS
 B) ALL MATERIAL RATED 130C OR BETTER.
 C) TRIPLE INSULATION WIRE ON SEC'S & BIAS.
 D) DESIGNED TO MEET ≥6.5mm CREEPAGE REQUIREMENTS.
 E) VARNISH FINISHED ASSEMBLY.

REV.	DESCRIPTION OF CHANGES	BY
05/02/03	ORIGINAL RELEASE	PP
07/07/03	CHANGED PIN WIRE LOCATION	PP



UNLESS OTHERWISE SPECIFIED
 DIMENSIONS ARE IN MM
 DIMENSIONAL TOLERANCES ARE:
 DECIMALS ANGLES
 .X ± .25 ±0° 30'
 .XX ± .15
 DO NOT SCALE DRAWING

FLYBACK TRANSFORMER CONTROL DRAWING	
PREMIER P/N: TSD-1853	REVISION: 07/07/03
DRAWN BY: PETER PHAM	REF: 20326006
SCALE: NONE	SHEET: 1 OF 3